

SCHOLARSHIP BEYOND BORDERS

2019 FELLOWS FORUM



Friday, March 1:

Research on Borders and Migration

Friday, March 8:

Research Negotiating Borders



The Graduate School | Florida State University



Schedule of Events

Friday, March 1

10:00 AM - 10:30 AM

10:30 AM - 10:45 AM

10:45 AM - 11:45 AM

11:45 AM - 12:30 PM

12:30 PM - 2:00 PM

2:00 PM - 2:30 PM

Friday, March 8

1:30 PM - 2:00 PM

2:00 PM - 2:15 PM

2:15 PM - 3:45 PM

3:45 PM - 4:00 PM

4:00 PM - 5:00 PM

5:00PM - 6:00 PM

Check-In

Introductions

Dr. Mark Riley
Dean, The Graduate School

Dr. Lisa Liseno
Assistant Dean & Director of the Fellows Society, The Graduate School

Keynote Address

Dr. Mathew Hauer
Assistant Professor, Sociology

Lunch

Panel of Speakers

Dr. Suzanne Sinke
Associate Chair, History

Dr. Christopher Uejio
Assistant Professor, Geography

Ms. Carrie Danielson
Graduate Assistant, Ethnomusicology

Networking & Conversation

Check-In

Introductions

Dr. Mark Riley
Dean, The Graduate School

Dr. Lisa Liseno
Assistant Dean & Director of the Fellows Society, The Graduate School

Panel of Speakers

Ms. Dorothy Chan
Graduate Student, English

Dr. Paromita Sanyal
Associate Professor, Sociology

Dr. Elwood Carlson
Professor, Sociology

Break

Keynote Address

Ms. Una Bilic
Site Manager, International Rescue Committee

Reception

Program Description

In her collection *Borderlands/La Frontera: The New Mestiza* (1987/2007), Gloria Anzaldúa defines borders and borderlands as she speaks about the U.S.-Mexican border: “Borders are set up to define the places that are safe and unsafe, to distinguish us from them. A border is a dividing line, a narrow strip along a steep edge. A borderland is a vague and undetermined place created by the emotional residue of an unnatural boundary. It is in a constant state of transition. The prohibited and forbidden are its inhabitants” (p. 25). In her preface to the first edition, she points to an understanding of borders and borderlands as both physical and felt, speaking of psychological, sexual, and spiritual borderlands as a queer Chicana woman. She states, “Borderlands are physically present wherever two or more cultures edge each other, where people of different races occupy the same territory, where under, lower, middle and upper classes touch, where the space between two individuals shrinks with intimacy.”

Borders are not always geographic or political, but can also be physical, emotional, social or cultural. Working across borders can involve working where one is the outsider, crossing over into another territory. With this broad definition in mind, the 2019 Fellows Forum explores the following questions: how does research transcend, support, challenge and otherwise negotiate borders in an increasingly mobile and globalized world? And how is academic research affected when borders and the politics of migration are hotly contested?

Presentation Synopses

Day One:

The first day of the forum is dedicated to research that is itself focused on the issues of borders and migration as a topic. Speakers will discuss research that includes the nature of borders and the dynamics around and across them as their subject of study

Day Two:

The second day examines border negotiation as a component methodology of research. These scholars research a variety of topics, but experience the impact of borders in some way as part of their work.

DAY ONE:
Keynote Address



Dr. Mathew Hauer

Assistant Professor, Sociology
Florida State University

Mathew Hauer is an Assistant Professor of Sociology at Florida State University who studies the impacts of climate change on society. Recently, his research has focused on how migration induced by sea level rise could reshape the U.S. population distribution. The New York Times, National Geographic, Time Magazine, Popular Science, USA Today, and others have featured his research. Before coming to Florida State University, Dr. Hauer spent eight years directing the Applied Demography Program at the University of Georgia where he provided valuable demographic research to local, state, and federal governments.



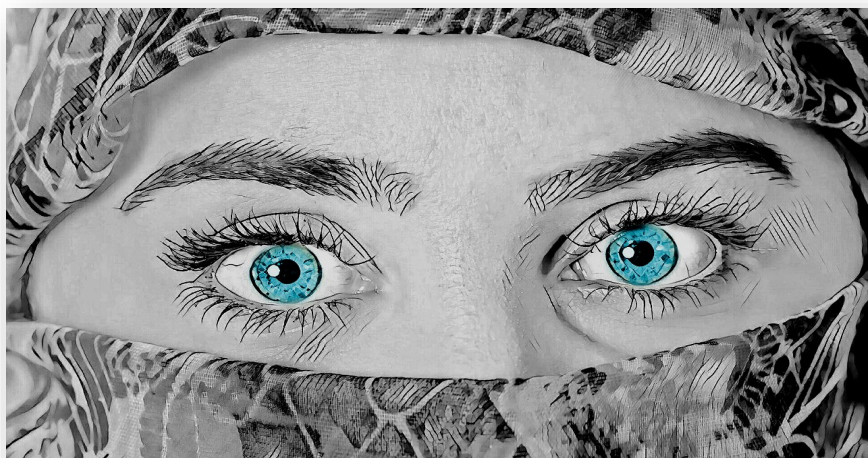


Dr. Suzanne Sinke

Associate Chair, History

Florida State University

Suzanne M. Sinke is Director of Graduate Studies and Associate Professor of History at Florida State University. A specialist in migration and gender studies in the U.S. context, she is the author of *Dutch Immigrant Women in the United States, 1880-1920* (2002) and co-editor of three additional books, including *Letters Across Borders: The Epistolary Practices of International Migrants* (2006) which showcased her interest in how scholars use letters as sources. Sinke's extensive list of journal articles includes venues such as *International Migration Review*, *OAH Magazine*, *Gender Issues*, *Journal of American Ethnic History*, and *Immigrants and Minorities*. The Organization of American Historians promotes Sinke as one of its distinguished lecturers, and she has received two teaching Fulbright awards. Since Fall 2018 she served as editor for the *Journal of American Ethnic History*. Many of Sinke's publications link marriage and international migration across U.S. history.



DAY ONE PANEL:

Research on Borders and Migration



Dr. Christopher Uejo

Assistant Professor, Geography

Florida State University

For the past 15 years, Dr. Christopher Uejo has researched how the physical environment influences human health and well-being. Dr. Uejo is the co-author of the Centers for Disease Control and Prevention's Building Resilience Against Climate Effects (BRACE) Framework and frequently works with health departments to understand and adapt to climate change.

A graphic with a rounded rectangular shape featuring a vertical gradient from red at the top to yellow at the bottom. The text "Climate & Health" is centered in a white, bubbly font with a blue-to-green gradient fill and a white outline. The ampersand is smaller and positioned between the two main words.

Climate
&
Health



Carrie Danielson

Graduate Assistant, Ethnomusicology
Florida State University

Carrie Danielson is a Ph.D. Candidate in Ethnomusicology at Florida State University whose research interests lie at the intersection of children's musical cultures, forced migration, and Scandinavian culture and society. Her current research explores the participation of Syrian and Afghan refugee children in Sweden's historically democratic music-and-arts schools, or kulturskolor, and how these institutions act as sites for cultural friction and transfer on local, national, and international levels. Carrie holds a Master of Music in Musicology from Florida State and a Bachelor of Arts in Music from Brown University. She is a 2018 recipient of the Presser Graduate Music Award and has presented her work at regional, national, and international conferences in the disciplines of musicology, ethnomusicology, music education, and children's history.



FACTS & FIGURES:

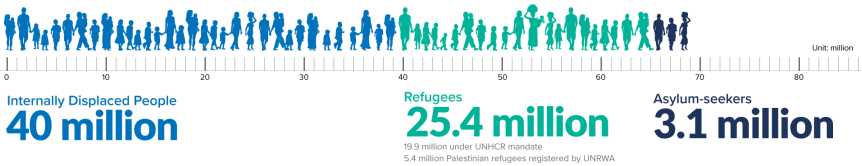


An unprecedented **68.5 million** people around the world have been forced from home. Among them are nearly **25.4 million refugees**, over half of whom are **under the age of 18**.

There are also an estimated **10 million stateless people** who have been denied a nationality and access to basic rights such as education, healthcare, employment and freedom of movement.

In a world where nearly **1 person is forcibly displaced every two seconds** as a result of conflict or persecution, the work at UNHCR is more important than ever before.

68.5 million forcibly displaced people worldwide

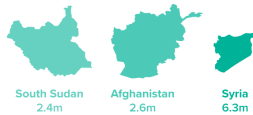


Where the world's displaced people are being hosted

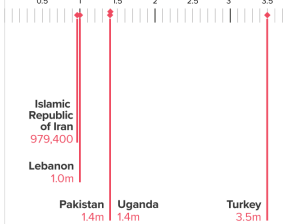


85 per cent of the world's displaced people are in developing countries

57% of refugees worldwide came from three countries



Top refugee-hosting countries



10 million stateless people

102,800 Refugees resettled

44,400 people a day forced to flee their homes because of conflict and persecution

16,765 personnel
UNHCR employs 16,765 people worldwide (as of 30 November 2018)

138 countries
We work in 138 countries (as of 30 November 2018)

We are funded almost entirely by voluntary contributions, with 87 per cent from governments and the European Union and 10 per cent from private donors

SOURCE: UNHCR/19 JUNE 2018

Source: UNHCR / 19 June 2018

For more information visit: <https://www.unhcr.org/>



Dorothy Chan

Graduate Student, English
Florida State University

Dorothy Chan is the author of *Revenge of the Asian Woman* (Diode Editions, March 2019), *Attack of the Fifty-Foot Centerfold* (Spork Press, 2018), and the chapbook *Chinatown Sonnets* (New Delta Review, 2017). She was a 2014 finalist for the Ruth Lilly and Dorothy Sargent Rosenberg Poetry Fellowship, and her work has appeared or is forthcoming in *Academy of American Poets*, *The Cincinnati Review*, *The Common*, *Diode Poetry Journal*, *Quarterly West*, and elsewhere. Chan is the Editor of *The Southeast Review* and Poetry Editor of *Hobart*. Starting in Fall 2019, she will be an Assistant Professor of Creative Writing at the University of Wisconsin-Eau Claire. Visit her website at dorothy-poetry.com.



DAY TWO PANEL: Research Negotiating Borders



Dr. Paromita Sanyal

Associate Professor, Sociology

Florida State University

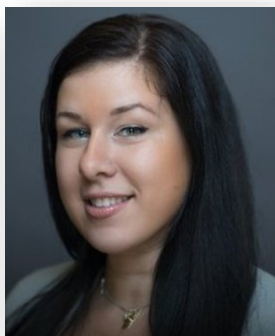
Dr. Paromita Sanyal is an Associate professor of Sociology at Florida State University. She specializes in development, gender, economic and political sociology. Her research examines large-scale programs aimed at inducing development, women's empowerment, and financial inclusion. Dr. Sanyal has studied micro-credit groups and self-help groups, microfinance, and poverty alleviation programs in India.

She is the author of *Oral Democracy: Deliberation in Indian Village Assemblies* (2018/ 2019). She has also authored the award-winning book 'Credit to Capabilities: A Sociological Study of Microcredit Groups in India', published by Cambridge University Press (2014). Her articles have appeared in the *American Sociological Review*, *Qualitative Sociology*, *Social Forces* and other journals.



Photo Courtesy of <https://sanyalsociology.wordpress.com/>

DAY TWO: Keynote Address



Una Bilic

*Site Manager,
International Rescue Committee
Tallahassee, Florida*

Una Bilic serves as site manager for the Tallahassee office of the International Rescue Committee, a global organization that provides humanitarian help during disaster and crisis.

As the Site Manager, she oversees the development, implementation, and completion of all grants, contracts and activities related to resettlement and refugee services. Una received a Bachelor's degree in Biomedical Science from University of South Florida and a Master's degree in Public Administration from University of Central Florida.





**The 2019 Fellows Forum was Organized
by the Following Fellows Society Members:**

Vivianne Asturizaga
Musicology

Brittney Dennis
Sociology

Aliza DeNobrega
Biology

Kerestin Goodman
Chemistry

Hanna Hover
Economics

Elise Kieffer
Educational Leadership & Policy

Yancili Lozano Torres
Urban & Regional Planning

McKenna Milici
Musicology

Sophia Rahming
Higher Education

Anna Worm
English



Additional Thanks to Our Staff:

Dr. Lisa Liseno
*Director, The Fellows Society & Assistant Dean,
The Graduate School*

Ms. Katrina Williams
Event Coordinator, The Graduate School

THE FELLOWS FORUM

SCHOLARSHIP BEYOND BORDERS

Each year, under the direction of The Graduate School, members of the Fellows Society organize and participate in an interdisciplinary symposium designed to engage students from a broad range of academic disciplines. Proposals for the 2020 Fellows Forum topic are due October 2019.



The Graduate School | gradschool.fsu.edu