

Fellows Forum 2024

HUMAN [NATURE]: A DIALOGUE ON ECOINTERACTIONS



 [FSU Fellows Forum](#)

 [@FSUFellowsForum](#)

 [@FSUFellowsForum](#)



March 28-29, 2024

Online &

The Nancy H. Marcus Great Hall



The Graduate School at Florida State University

ABOUT THE THEME

Human [Nature]: A Dialogue on Eco-Interactions



The word **ecosystem** describes the complex, dynamic relationship between organisms and their environment. This year, our interdisciplinary Fellows Forum explores how humans impact—and are impacted by—their environments. By considering these **Eco-Interactions** through unique theoretical lenses spanning the arts and sciences, a rich dialogue will emerge, inviting exploration of topics such as: the role of nature and nurture in shaping human development; the relationship between migration and ecology; the sustainability of physical and conceptual structures in the arts; and much more. Ultimately, the goal of the 2024 Fellows Forum is to illuminate the fascinating complexity of the human ecosystem and to showcase how **interdisciplinary collaboration** can lead to innovative solutions for a sustainable and harmonious future.

DAY ONE

Nature & Humans: Exploring the Nexus

9:30 AM to 9:45 AM

Welcome

Ashley Jarvis

Director, FSU Fellows Society
Florida State University

9:45 AM to 10:45 AM

Keynote Address

Dr. Annika A. Culver

Professor of East Asian History
Florida State University

10:55 AM to 12:00 PM

Speaker Panel

Dr. Rasheda Haughbrook

Assistant Professor of Psychology
Florida State University

Dr. Heide Castañeda

Professor of Anthropology
University of South Florida

12:00 PM to 1:00 PM

Lunch Break

1:00 PM to 1:45 PM

Speaker Session

Dr. Matt Cooper Borkenhagen

Assistant Professor of Reading Education
Florida State University

1:55 PM to 3:00 PM

Workshop: Gentle Yoga

Charlene H. Cappellini

Gentle Yoga Instructor
Tallahassee, Florida

3:00 PM to 3:15 PM

Closing Remarks



DAY TWO

The Global Ecosystem: Myths vs. Reality

9:30 AM to 10:00 AM

Check-In & Breakfast

10:00 AM to 10:15 AM

Welcome

Dean Mark Riley

Florida State University

10:15 AM to 11:30 AM

Speaker Panel

Dr. Jeff Chanton

Professor of Oceanography

Florida State University

Dr. Franz Prichard

Assoc. Prof. of East Asian Languages & Cultures

Florida State University

Dr. Ronald E. Doel

Professor of History

Florida State University

11:40 AM to 12:40 PM

Student Presentations

12:40 PM to 1:40 PM

Lunch Break

1:40 PM to 2:30 PM

Speaker Session

Dr. Melba Marin-Velasquez

Associate in Research

Learning Systems Institute, FSU

2:30 PM to 3:30 PM

Workshop: The Butterfly Affect

Dr. Sarah Fahmy

Asst. Prof. of Theatre & Performance Research

Florida State University

3:30 PM to 3:45 PM

Closing Remarks



2024 FELLOWS FORUM

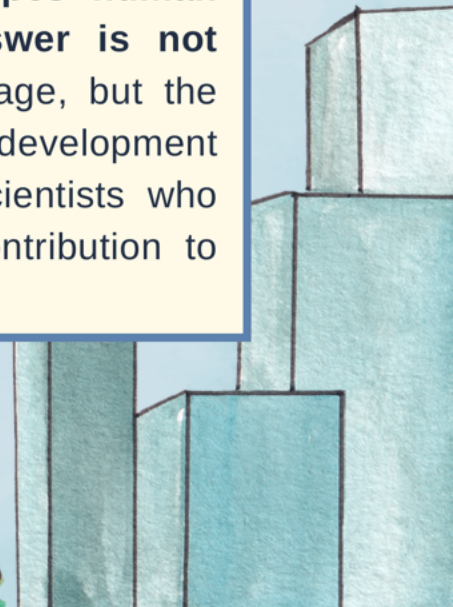
Themes

ECOSYSTEM + CLIMATE

An ecosystem is a set of elements that live symbiotically within a geographical space. These elements are both living—fauna, microorganisms and plants—and non-living—weather and landscape. The chemical and physical processes that govern ecosystems are closely and symbiotically linked to the living species within them: each is essential for the proper functioning of the other. **With climate change, however, researchers from scientific disciplines spanning Physics, Chemistry and Biology are witnessing progressive changes in the way ecosystems function—**disturbances which could very well have a detrimental effect in the years to come. At the Fellows Forum, we will hear from scientists who are aiming to understand ecosystems as they exist now and to develop modeling tools for the observation of changes over the coming years.

NATURE + NURTURE

Humans do not progress through life in a vacuum. Rather, we develop within rich & dynamic context which extends beyond our physical surroundings to include family structures, schools, neighborhoods, geopolitical realities, and more. Researchers integrate foundational theories of Psychology, Education, and Behavioral Genetics in their investigation of the age-old debate: **is it “nature” or “nurture” that shapes human development? Scientists increasingly find that the answer is not either/or, but both.** Genetic predispositions may set the stage, but the environment—and our interactions with it—critically influences development and outcomes. At the Fellows Forum, we will hear from scientists who attempt to measure the environment and understand its contribution to cognitive, behavioral, and emotional development.



2024 FELLOWS FORUM

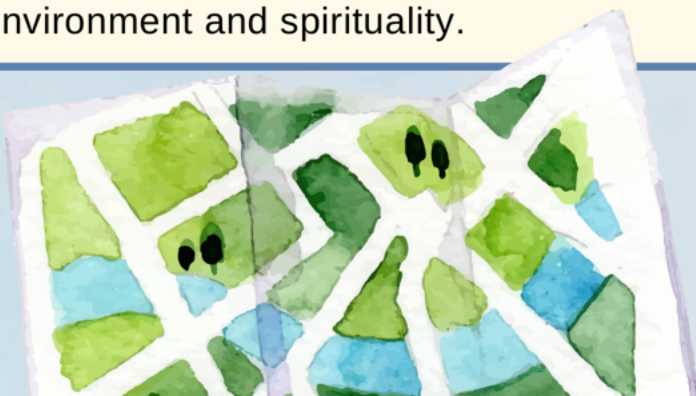
Themes

MIGRATION + ECOLOGY

Migration and ecology are intricately linked, shaping human societies and the environment. Environmental displacement drives migration, as seen with climate refugees fleeing rising sea levels and extreme weather. Resource scarcity often leads to conflict and displacement. Urbanization further alters landscapes and resource use. Understanding this relationship is vital for sustainable policies addressing both human mobility and environmental challenges. **Climate change and ecological degradation emphasize the urgency of managing this interplay.** Recognizing these effects is crucial for building resilient, sustainable societies. At the Fellows Forum, experts will delve into migration and ecology dynamics and discuss why this is necessary for informed decision-making and developing strategies for sustainability.

NATURE + HUMANITY

Since the 1970s, investigation of the human-nature relationship has taken unprecedented form, manifesting both as academic interest and urgency in policymaking among academics of the humanities. In literary studies, “ecocriticism” uses an interdisciplinary lens from ecology to sample the portrayal of nature in literature. A topic of growing importance to our everyday lives, it has invited scholarly discussions on the **possibilities for better coexistence between humans and non-humans in various imaginative capacities.** Similarly, environmental history offers informative and analytical angles to examine human interference, control, and negotiation with the earthly order. At the Fellows Forum, scholars will speak to individualistic and collective differences of perceptions on human-nature intercourse, as well as their tending to the environment and spirituality.



2024 FELLOWS FORUM

Themes

ART + ENVIRONMENT

Artists are faced with multiple aspects of the ecosystem. We question how we interact with and impact it in our practices, and what our role is in modeling and promoting sustainable behavior. **But we must also face our internal ecosystem – the people who make art happen.** In the theatre, there have long been issues with how we treat those at the “bottom,” especially because of the idea that one should be grateful to participate in such a competitive field, even if the wages are low (or non-existent), the working conditions unsafe, and the hours long. More and more artists have voiced how these practices contradict the stated mission of many artistic institutions to be accepting and progressive, leading to a deeper discussion of the ways in which the system unfairly excludes many from participation. Movements such as the Guerilla Girls, #MeToo, and the SAG-AFTRA and Writer’s Guild Strikes have pushed institutions to consider ways to create a more sustainable and supportive environment for all artists. While some fear that this will lower standards or negatively impact the quality of the works, many believe it is necessary for the industry to grow and foster new talent. At the Fellows Forum, experts will speak about the evolving ecosystem of the arts and what this means for artists now and in the future.



DAY ONE

Speaker Profiles

DR. ANNIKA A. CULVER



Session Information

Keynote Address

“Humanizing Nature:
Ecocriticism and Environmental
History—Lessons from
Ornithology and Japan“

Time 9:45 AM to 10:45 AM

Location Zoom

Annika A. Culver, Ph.D. serves as Professor of East Asian History at Florida State University (FSU) and is a scholar in the US-Japan Network for the Future. Professor Culver's research and publications have focused on propaganda and advertising, cultural production in Manchuria/Manchukuo and the Japanese empire, the history of science in Japan, and more recently, the growth of Japanese consumer capitalism. Her latest monograph is *Democratizing Luxury: Name Brands, Advertising, and Consumption in Modern Japan* (2023), and she has published three other books: *Glorify the Empire: Japanese Avant-Garde Propaganda in Manchukuo* (2013), the co-edited volume *Manchukuo Perspectives: Transnational Approaches to Literary Production* (2019), and *Japan's Empire of Birds: Anglo-Americans, Aristocrats, and Transwar Ornithology* (2022).

DAY ONE

Speaker Profiles

DR. HEIDI CASTAÑEDA



Session Information

Day 1 Speaker Panel

Time 10:55 AM to 12:00 PM

Location Zoom

Heide Castañeda is Professor of Anthropology at the University of South Florida. Her research areas include critical border studies, political and legal anthropology, medical anthropology, migration, migrant health, citizenship, focusing on the U.S./Mexico border, Mexico, Germany, and Morocco. She is the author of *Migration and Health: Critical Perspectives* (Routledge, 2023) and *Borders of Belonging: Struggle and Solidarity in Mixed-Status Immigrant Families* (Stanford University Press, 2019). Her work has been funded by the National Science Foundation, National Institutes of Health, the Fulbright Program, the German Academic Exchange Service (DAAD), and the Wenner-Gren Foundation for Anthropological Research.

DAY ONE

Speaker Profiles

DR. RASHEDA HAUGHBROOK

Session Information

Day 1 Speaker Panel

Time 10:55 AM to 12:00 PM

Location Zoom



Rasheda Haughbrook, Ph.D., is a tenure-track Assistant Professor in the Department of Psychology at Florida State University. Dr. Haughbrook was hired as a Florida FIRST faculty member, which constituted a cohort of seven diverse faculty members aimed at transforming the institutional culture at FSU in order to generate a self-sustaining scientific community dedicated to inclusive excellence. Dr. Haughbrook serves as faculty in the Center for Population Sciences and Health Equity, and as affiliate faculty in the Florida Center for Reading Research. She earned her bachelor's degree in Psychology at Florida A & M University in 2010 and a Master of Science degree in Cell Molecular Biology from the same institution in 2013. She earned a second master's degree in Developmental Psychology from Florida State University in 2015 and earned her Ph.D. in Developmental Psychology in 2020. Dr. Haughbrook is interested in understanding genetic and environmental factors that influence development across different domains, including academic achievement, mental health, and physical health. Dr. Haughbrook is particularly interested in understanding the lived contextual experiences of historically marginalized individuals.

DAY ONE

Speaker Profiles

DR. MATT COOPER BORKENHAGEN

Session Information

Speaker Session

“Time and Pressure: Dynamical Systems and Learning to Read (a Brief History)”

Time 1:00 PM to 1:45 PM

Location Zoom



Matt Cooper Borkenhagen is an Assistant Professor in the School of Teacher Education in the College of Education, Health, and Human Sciences and Core Faculty at FCRR. Matt's research is on the learning mechanisms that underlie reading development and how aspects of the language (including print) environment can serve to accelerate development. He uses a variety of methods but primarily uses computational models of learning as the core of his research program.

DAY ONE

Speaker Profiles

CHARLENE H. CAPPELLINI



Session Information

Workshop

Gentle Yoga for Self Care

Time 1:55 PM to 3:00 PM

Location Zoom

Charlene has been practicing yoga since 1985. A long-time student with Loretta Armer, she completed her first yoga teacher training & certification from Dr. Armer's Namaste Yoga Teacher Training Center (1999-2000). She has a 200-hour certification from Kripalu Yoga Center (2004) & a 500-hour teaching certification with Gary Kraftsow at the American Viniyoga Institute (2013). Charlene trained in Restorative Yoga with Judith Lasater & is a certified Relax and Renew™ teacher (2008). Before this, Charlene had a 40-year career in academic education. A graduate of FSU, she has an MA in English and an MLS, and spent 17 years as a secondary English and Drama teacher, media specialist, and college instructor. Later, she served as a project manager, writer/editor, & production supervisor for FSU and TCC agencies developing educational & training materials. Finally, she was a project manager with Florida State's distance learning program before retiring in 2002. From 2000-2019, Charlene taught yoga classes at Namaste Yoga studio. During the Pandemic, she began teaching Online Gentle Yoga classes in 2020 and continues to do so. She also now teaches Gentle Yoga once a week in-person in Tallahassee. For more information about classes, see gentleyogalife.com.

DAY TWO

Speaker Profiles

DR. JEFF CHANTON



Session Information

Day 2 Speaker Panel

Time 10:15 AM to 11:30 AM

Location Great Hall, Honors,
Scholars, & Fellows House

Jeff Chanton received his PhD in 1985 at the University of North Carolina at Chapel Hill where he worked on the nearshore zone. He and his advisor, Chris Martens were greatly influenced by a lecture from the legendary Ralph Cicerone, which focused on the rapid increase in atmospheric methane, a powerful greenhouse gas, of which scientists had just become aware. Chanton then began working on methane transport from wetlands, landfills and other environments. As a scientist aware of our changing climate and its causes, and he has observed the effects of climate change along the coastline firsthand. Chanton is a Lawton Professor at FSU and has published over 300 papers in the refereed literature. He has had the extreme good fortune to have benefitted by excellent collaborators and scientific colleagues.

DAY TWO

Speaker Profiles

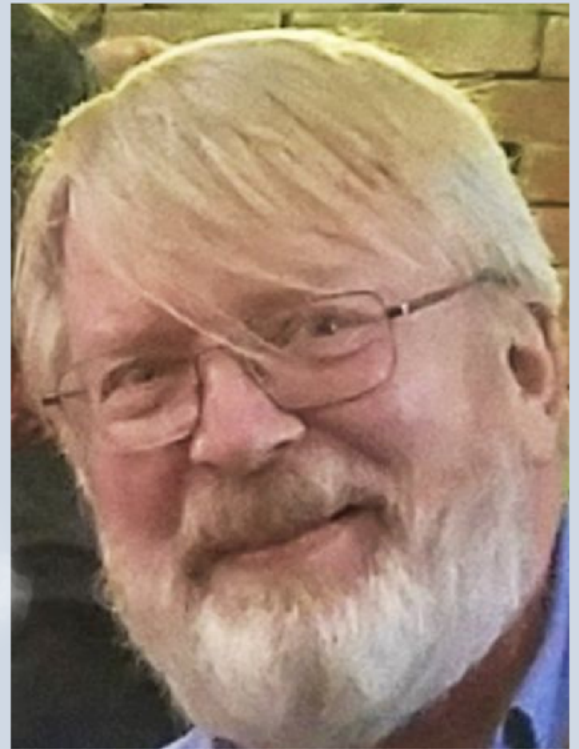
DR. RONALD E. DOEL

Session Information

Day 2 Speaker Panel

Time 10:15 AM to 11:30 AM

Location Great Hall, Honors,
Scholars, & Fellows House



Ronald E. Doel is Associate Professor of History (and Faculty Affiliate in Geography) at FSU. He has written extensively on the emergence of the environmental sciences in Cold War America and on interdisciplinary practices in science. He was Project Leader for the 9-member, 7-nation research team “Colony, Empire, Environment: A Comparative International History of Twentieth Century Arctic Science” (BOREAS Initiative, European Science Foundation) and is co-editor of *Exploring Greenland: Cold War Science and Technology on Ice* (2016). He was a fellow at the Rachel Carson Center (Munich, Germany) and an Erskine Fellow at the University of Canterbury (New Zealand).

DAY TWO

Speaker Profiles

DR. FRANZ PRICHARD



Session Information

Day 2 Speaker Panel

Time 10:15 AM to 11:30 AM

Location Great Hall, Honors,
Scholars, & Fellows House

Franz Prichard's interdisciplinary research and teaching explore the literature, environmental thought, and visual media of contemporary Japan. In his first book, Residual Futures: The Urban Ecologies of Literary and Visual Media of 1960s and 1970s Japan he explored the ways Japanese writers, artists, and critics reinvented their work in response to Japan's changed urban environments. His current research develops transcultural and ecocritical approaches to the study of contemporary Japanese literature and visual media. Weaving together the perspectives of writers, critics, photographers, and artists, among others, this research elaborates ecocritical approaches with a rigorously planetary perspective in pursuit of collaborative ways of knowing the generative relations among humans, animals, material objects, and shared worlds.

DAY TWO

Speaker Profiles

AJITHTHA SUGANTHAN

Session Information

Student Presentations

Time 11:40 AM to 12:40 PM

Location Great Hall, Honors,
Scholars, & Fellows House



Ajiththa Suganthan is a Graduate Student at the Department of Religion at FSU doing a Ph.D. in History and Ethnography of Religions with a concentration on South Asia. Ajiththa, FSU's first Fulbright Scholar from Sri Lanka, completed the Master of Arts in Art History with a focus on Museum & Cultural Heritage Studies. Ajiththa's research interests are in the cultural heritage, ethnography, language, and religions of South Asia. During her graduate studies, she completed an internship at the National Park Service's Southeast Archeological Center (SEAC), where she contributed to a metal rehousing project and cataloging Native American prehistoric ceramics. In this forum, she is going to present an Archaeological Investigation in Jaffna, Sri Lanka.

DAY TWO

Speaker Profiles

JORGE GALEANO-CABRAL



Session Information

Student Presentations

Time 11:40 AM to 12:40 PM

Location Great Hall, Honors,
Scholars, & Fellows House

Jorge Galeano-Cabral holds a bachelor's degree in Energy Engineering from the Federal University for Latin American Integration (UNILA) in Brazil. He also has a master's degree in Sustainable Energy and a Ph.D. in Mechanical Engineering from Florida State University (FSU). He is currently a research assistant at the National High Magnetic Field Laboratory, where he performs design, synthesis, and characterization of novel quantum materials for energy applications with a focus on low-temperature thermoelectric materials.

DAY TWO

Speaker Profiles

HOLLY HENNING

Session Information

Student Presentations

Time 11:40 AM to 12:40 PM

Location Great Hall, Honors,
Scholars, & Fellows House



Holly Henning is a Ph.D. Candidate in the Higher Education program at Florida State University. She is a Research Assistant in the Center for Postsecondary Success where she assists with research on developmental education reform, alternative course placement, and other student success initiatives. Her additional research interests include undergraduate student identities and development in academic major selection and change. Before her Ph.D., Holly was a higher education practitioner for a decade in academic advising and international education settings. She holds an M.A. in Higher Education from the University of Mississippi and an MBA from the University of Alabama at Birmingham.

DAY TWO

Speaker Profiles

DR. MELBA MARIN-VALASQUEZ

Session Information

Speaker Session

Time 1:40 PM to 2:30 PM

Location Great Hall, Honors,
Scholars, & Fellows House



Melba Marin-Velasquez is an Associate in Research at the Learning Systems Institute. Her research interests, stemming from her studies in International and Multicultural Education, focus on decolonizing and Indigenous methodologies and approaches to examine the intersectionality of gender, culture, and education in Indigenous communities. Her research, past and current, center on Indigenous knowledge systems and lived experiences of Indigenous Peoples. Her work with Yucatec Maya healers in Belize as well as with a Tzotzil Maya Muslim community in San Cristobal de las Casas in Chiapas, Mexico is ongoing.

DAY TWO

Speaker Profiles

DR. SARAH FAHMY



Session Information

Workshop

The Butterfly Affect

Time 2:30 PM to 3:30 PM

Location Great Hall, Honors,
Scholars, & Fellows House

Sarah Fahmy, PhD, is an Assistant Professor of Theatre and Performance Research at Florida State University. Sarah is a decolonial scholar-artist, whose work intersects Middle East North African identity politics, community-based performance, digital humanities, and ecofeminist art-science devising. She is a co-founder and chair of the Middle Eastern Theatre Focus Group at ATHE, where she's leading the development of the "MENA Theatre Handbook: A Digital Guide to MENA Plays and Scholarship" and is a member of MENATMA's Educators Circle. Her publications appear in theatre and social science journals ranging from Theatre Topics and RiDE, to PloS One; and Environmental Communication. Sarah has devised multi-disciplinary site-specific pieces and facilitated applied performance and Playback with hundreds of participants internationally, ranging from creative climate communication with scientists, to youth-centered workshops for the UN Commission on the Status of Women. Her current book project explores MENA-specific decolonial feminist praxis with young women.

ABOUT THE TEAM

The 2024 Fellows Forum was organized by the following members of the FSU Fellows Society:

Amber Noor Mustafa
International & Multicultural
Education

Emily Lu
History

Oriane Yvin
Oceanography

Hayk Benjanyan
Economics

Stephanie Estrera
Psychology

Rebecca Curran
Theater Studies

Christine White
Psychology

Ponsiano Ngondwe
Social Work

Additional Thanks To:

Ashley Jarvis
Melissa Clairjeune
Dean Mark Riley



MORE ABOUT...

The FSU Fellows Society

The Fellows Society was established by Dean Marcus in 2007 to create opportunities for interdisciplinary networking and learning among outstanding graduate students who hold competitive fellowships, and the wider FSU community. The Fellows Society continues today to be a premiere university institution with diverse events that are designed to expand members' intellectual horizons and facilitate broadened networks across professions and disciplines.

The Annual Fellows Forum

Each year, members of the Fellows Society organize and participate in an interdisciplinary symposium designed to engage students from a broad range of academic disciplines. If you are interested in being involved with the planning committee or any other opportunities, make sure to watch out for emails from the Fellows Society.

